

Where "No Man is an Island" and EVERYONE is a STAR!

Sulie and Pearl
Harand Camp
of the
Theatre Arts
est. 1955

Register Today!
Limited Availability



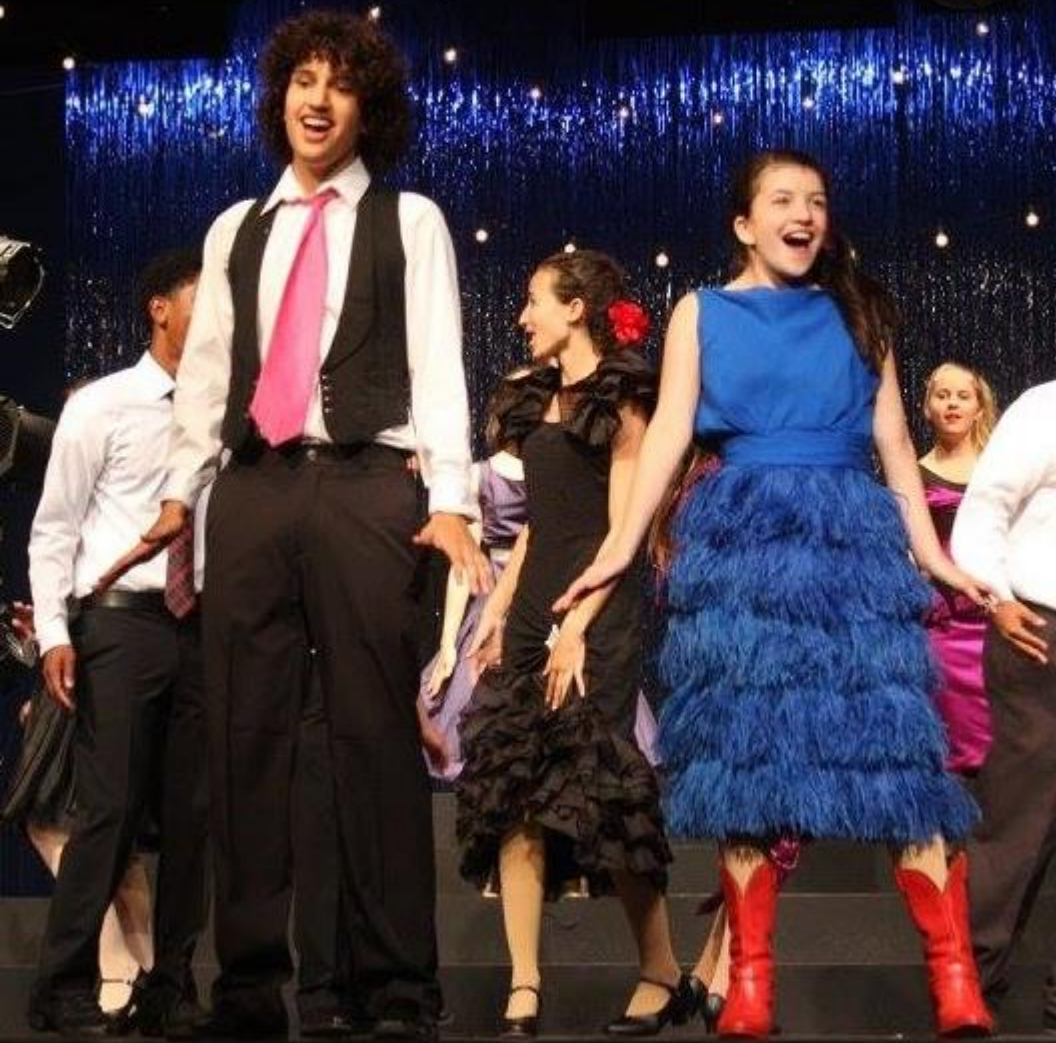
Singing, Dancing, Acting
Sports, Activities & Camp Fun!

Co-Ed, Ages 7-18 ~ 1, 3 and 6 week sessions
Lifelong Friendships ~ Modern Facilities



CONTACT US: 847.864.1500
harandcamp@gmail.com | www.harandcamp.com

Sulie and Pearl
Harand Camp
of the
Theatre Arts
est. 1955



“No Man is an Island” & EVERYONE is a STAR!

847.864.1500

harandcamp@gmail.com

www.harandcamp.com

“Harand is a family-oriented place that knows how to change lives and provide excellent experiences that last a lifetime.”

At Harand Camp “No Man is an Island” and EVERYONE is a STAR!

Established in 1955, Harand Camp was one of the first overnight camps to combine musical theater with the fun of traditional camp. Located on the campus of Carthage College in Kenosha, Wisconsin, we offer first-rate arts training (in a non-competitive environment) for campers ages 7 to 18. In addition to the performing arts, campers enjoy sports and other fun elective activities, excursions, all-camp events and 60+ years of camp traditions. Sessions run for 1, 3, or 6 weeks and culminate with large-scale shows in our 400 seat, state-of-the-art theater. Harand Camp of the Theatre Arts is accredited by the American Camp Association and received the Program Excellence Award in 2013.

A Day in the Life of a Harander

7:30 a.m.	Wake Up
8:15 a.m.	Breakfast
9:00 a.m.	Morning Clean-Up
9:45 a.m.	Morning Theater or Activity Classes <i>Three 45-minute classes</i>
12:45 p.m.	Lunch
1:30 p.m.	Rest Hour / Free Time
2:25 p.m.	Afternoon Theater or Activity Classes <i>Three 45-minute classes</i>
5:45 p.m.	Dinner
7:00 p.m.	Evening Activities and Rehearsals <i>Schedule varies nightly!</i>
8:45 p.m.	Curfew Begins (based on age group) <i>Recreation continues for older campers</i>
11:00 p.m.	Final Curfew for Oldest Campers

“We were absolutely thrilled with everything. And the performances were spectacular!”

“A great camp & worth every dollar I spent & every hour of my children's time at camp!”



“Harand Camp is one of the best investments you can make in the development of your child.”

Harand Camp of the Theatre Arts | 1569 Sherman Ave. 201A | Evanston, IL 60201 | 847.864.1500 | harandcamp@gmail.com

“Transformative for any child, particularly those who enjoy performing!”

“The best experience a young person could ever have!”

PERFORMING ARTS

It is our goal for all campers to develop performance skills, while building self-confidence and learning how to live together in an atmosphere of acceptance. In preparation for final shows, campers take daily classes in singing, dancing, and acting with occasional evening rehearsals. Sessions culminate with major performances in our state-of-the-art theatre.



We welcome all levels of experience – from new performers to those working professionally - and do not require auditions for admission. No matter the experience level, all campers will have fun, feel supported and challenged, and shine on our stage.

EVERYONE is a STAR!



“Every child is a star! On and off the stage!”

ONE-WEEK WORKSHOP (1 week)

Your introduction to Harand Camp! Enjoy the same arts and recreation activities as other campers, concluding in a Workshop featuring selections from the 1st Session Pageant. For first-time campers, ages 7-12. Limited enrollment.

1st SESSION: PAGEANT (3 weeks)

Participate in a full-length musical revue featuring the entire camp. Each group performs two 10-15 minute sections of non-stop singing and dancing wearing our beautiful costumes. First Session campers also prepare one-act plays that are performed on visiting day.

2nd SESSION: SHOWS (3 weeks)

Each age group prepares a full musical. We produce classic and contemporary shows and casting is decided during the first week. Campers perform both a lead role and in the ensemble, ensuring that every Harander receives full musical theater experience and feels like a star!

“This camp is a treasure!”

“Harand is a magical place that takes children from every level & turns them into stars.”

“The memories your child will take with them are priceless!”

“Harand is a magical place that helped shape who I am today.”

CAMP LIFE

We are located on the beautiful campus of Carthage College in Kenosha, Wisconsin. Campers enjoy the comfort of modern facilities, residing in dorms overlooking Lake Michigan. Delicious meals are served in the dining hall which features an extensive menu by Sodexo.

AMAZING AMENITIES

400-Seat, State-of-the-Art Theater & Black Box

Dorms Overlooking Lake Michigan (2-3 per room)

Olympic-Size, Indoor Swimming Pool

Dance Studio & Fitness Center

Basketball, Racquetball and Sand Volleyball Courts

Air-Conditioned Classrooms

Meals by Sodexo (Accommodations for Dietary Needs)

On-Campus Security and Certified Nurse

Experienced Staff with low 4:1 Ratio

Accredited by the American Camp Association



“Best camp in the whole freaking world!”

ACTIVITIES

When not rehearsing in the evening, campers enjoy an exciting schedule of cabin nights, all-camp games & events, concerts and off-campus trips.

The cost of all activities is included in tuition, but families should contribute \$50/session to “mini-bank” for personal spending on trips and other needs.

“So warm and welcoming!”



Soccer, Basketball, Swimming, Volleyball, Badminton, Racquetball, Yoga, Zumba, Technical Theater, Improv, Dance, Costuming, Arts & Crafts, Photo, Video, Writing, All-Camp Games, Bowling, Talent Show, Skating, Karaoke, Costume Ball, Campfire, Beach Day, Banquet Celebration, Fireworks and more!

ELECTIVES

In addition to our theater program, campers also enjoy 3 periods of electives per day. We operate on a schedule of A-Days (M, W, F) and B-Days (Tu, Th, Sa), so campers have SIX classes of their own choosing!



“If you love theatre and having fun you must go! You will have the time of your life!”

“Harand has given me the confidence, talent and lifelong friends that helped me grow and change as a person.”



CAMP PHILOSOPHY

We offer an intensive arts program, but set ourselves apart by adhering to a philosophy of inclusion and a non-competitive spirit. We place a premium on social development and uphold the ideals of "No Man is an Island" in everything we do - from camp unity to our theater program. Since its founding, Harand has been a home for campers of all religions, ethnicities, and socioeconomic backgrounds.

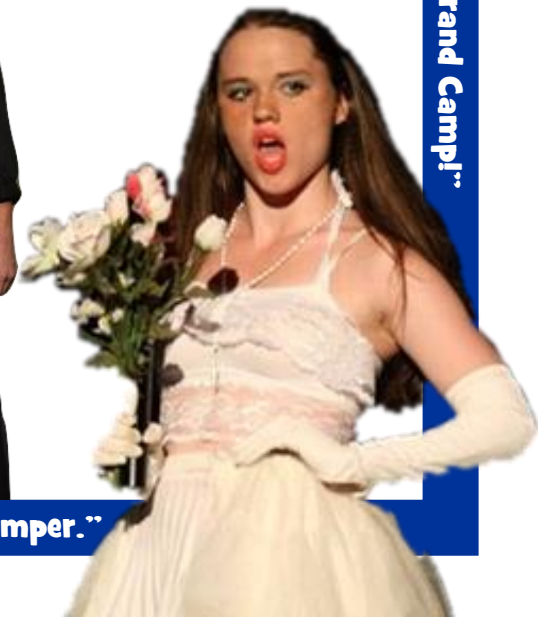


SCHOLARSHIPS

We strive to make camp affordable for all families and offer a variety of discounts, payment plans and scholarships. The Harand Camp Scholarship Fund, a 501c3 organization, provides full & partial need-based scholarships to young people who have an interest in music, dance, drama, or technical theater, and have financial need. More information can be found on our website www.harandcamp.com or call 847.864.1500.

PROGRAM OBJECTIVES

- To provide the fun & companionship of camp life
- To develop a love of the theatre arts
- To develop poise, confidence, and maturity
- To develop a more engaging personality through arts appreciation & expression
- To help campers be outstanding citizens in their communities
- To improve communication skills & peer interaction
- To achieve excellence without competition



“This is a magical place where memories are made forever.”

“I really can't say enough about Harand Camp!”

“Harand builds esteem, confidence & inclusion while providing an enriching experience for every camper.”

Jeremy Piven (Actor)

Joe Weisberg (Creator of The Americans)

Virginia Madsen (Actress)

Andrew Davis (Director)

Billy Zane (Titanic)
Bruce Block (Producer)
Sen. Russ Feingold
Laura Lippman (Author)

ALUMNI

Harand is considered a second home by thousands of alums worldwide who have built lifelong friendships and cherished memories through our special program. Many have left a mark in the arts, education, politics, and other fields, citing the positive impact of Harand, and the skills, relationships and confidence developed at camp.

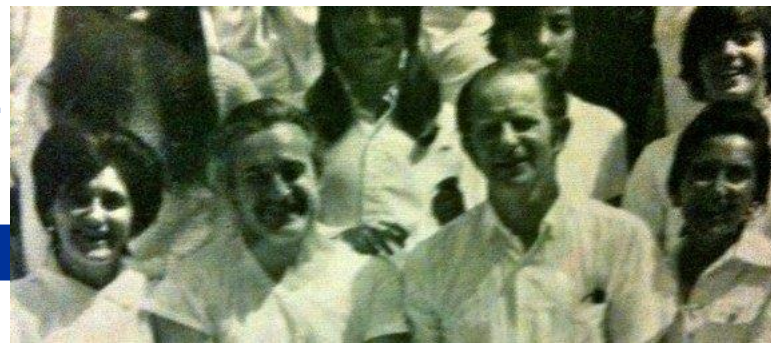


"Harand is like living the dream for me. How many places can you go as a kid and get fulfillment performing in plays - without all the politics - and still get to play sports all day? I will never forget that magical place."
Jeremy Piven, Emmy-Winning Actor

HISTORY

In 1952 sisters Sulie and Pearl Harand established Harand Studios of the Theatre Arts, one of the nation's first theater training centers for children. Pearl, a member of the Chicago Repertory Theatre, taught drama, and Sulie, known for incomparable one-woman interpretations of musicals, taught voice. Staff included Byrne and Joyce Piven and future Commissioner of Cultural Affairs Lois Weisberg. In 1955 the studio expanded to an overnight summer camp.

Billy Campbell (Actor)



STAFF & COUNSELORS

Harand has been family-run since its founding and many senior staff members have been working with us for over 35 years. All administrators, department heads, directors and choreographers are working professionals and/or educators with years of expertise. The knowledge, commitment and care they bring to camp is unsurpassed. We couldn't ask for a better team to help guide your children towards a successful summer.

Counselors come from across the country - and many have been campers themselves! Counselors must be over 18 and many hold advanced degrees. Counselors attend a rigorous pre-camp training so they are ready to help your camper thrive the moment they arrive.



The entire staff comes together as a team to create a wonderful experience for all Haranders. We are positive, enthusiastic, and above all, selfless. Our mantra is "Camp is for the Campers" as the children are always our top priority.

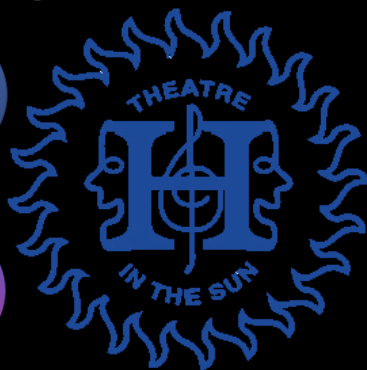
Jessie Fisher ("Once" on Broadway)

TJ Shanoff (Writer/Music Dir)

Zoe Perry (Scandal)



Register Today!



www.harandcamp.com



**"Harand Camp has made a tremendous contribution to arts education. Their approach should be reinvented in the public schools. Their model is an extraordinary model for teaching."
Lois Weisberg, Chicago Cultural Affairs Commissioner**

Sulic and Pearl
Harand Camp
of the
Theatre Arts
est. 1955



Parent and Alumni Testimonials



[Watch Jeremy Piven talk about Harand Camp on Jimmy Kimmel Live](#)

"Harand is like living the dream for me. How many places in the world can you go as a kid and get fulfillment performing in plays and still get to play sports all day long. I will never forget that magical place." ~ **Jeremy Piven, Emmy Award winning actor**



"Harand was home and the most important formative place I've ever been."
~ **Todd London, Former Tony-Award Winning Director of New Dramatists
Current Executive Director of University of Washington School of Drama**

"Harand is one of the most influential cultural-education institutions in the country...As a critic and teacher, I am indebted to Harand for teaching me to look for the unique qualities each individual brings to a role onstage or a task in real life."
~ **Albert Williams, Theater Critic & Professor at Columbia College Chicago**

"Harand was all about theater and music but even for someone like me who didn't have any talent, it was a magical place. People I met at Harand were among my biggest influences growing up. A few became lifelong friends."
~ **Jacob Weisberg, Washington Post**



"[Harand Camp] made a tremendous contribution to arts education. The Harand's approach should be reinvented today in the public schools. Their model is an extraordinary model for teaching."

~ **the late Lois Weisberg
Commissioner, Chicago Department of Cultural Affairs**

make it better

north shore—family, community and you

"We could not have chosen a better camp for our daughter!! Last year my daughter attended Harand for the first time and it was an amazing experience!! All I can say is, **Harand is a magical place that takes children from every skill level and turns them into stars.** The environment is warm and nurturing. The activities are exciting and non-competitive. In fact, my daughter was originally signed up for 3 weeks but called and begged us to let her stay 3 more! **Harand made my daughter feel like a star!** She talks about camp all of the time and cannot wait to return this summer!!!"

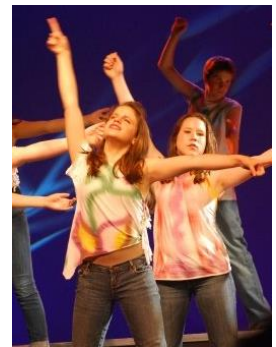
InsideCamps.com

Unbiased camp information and reviews

"My two children have been attending Harand for the past six summers. The camp is based on the Carthage College campus in Wisconsin - right on Lake Michigan - it's really beautiful. Both of my kids - my son is now 14 and my daughter is 12 have now preformed in several plays and acting and love of theater is simply part of their life. My son, is also pretty extreme athlete (Hockey, Karate, Lacrosse) -so this is the perfect balance for him. My daughter's growth at Harand has been more in the area of speaking and comfort on stage. At this time, I cannot ever see her with stage fright!

Bottom line - this is a great camp and worth every dollar I spent and every hour of my children's time at camp!"

"Every Child Is A Star! On and Off the Stage! I was a camper at Harand for over 8 years. My mother was a camper there for 5 years, and we both have worked on staff as counselors. Moreover, both my aunt and my cousin were campers at Harand. **This camp has changed all of our lives.** It is a theater camp that promotes confidence, acceptance, and self-esteem. **The lessons learned at this camp have shaped all of us into the people we are, while giving us memories to last forever.** My mom and aunt are still best friends with all of their camp friends, and I know my cousin and I will be too!"



"We are a 3 generation Harand family that loved every second of every minute of every hour of every day we spent at Harand Camp!!!!"

"I attended Harand from 1982-1989 in Elkhart Lake and my daughter is going for her 4th year this summer at Carthage College. This is a magical place where memories are made forever. Would recommend in a heartbeat!"

"Both of my daughters have had a wonderful experience at this fabulous camp!!!"
"My home away from home!"



"I went to Harand for 9 years and absolutely loved it. At the time I attended, it was the best thing in my life. As an adult, it is still one of the best things that ever happened to me. It gave me joy, confidence and best friends. Little did I know my own children would find that exact same amazing experience 25 years later. Whether they are into theater or not, the experience of being on stage in front of people, conquering your fears, learning to sing and dance while being in a safe environment is invaluable. In addition to theater, there are plenty of opportunities to do sports, visual arts and swimming. The staff is so kind and loving. I really cannot say enough about Harand Camp."



"Your child might cry their eyes out the first night at sleepaway camp. But Harand is so excellent that they will cry even harder when they leave. Those that come to stay for only 1 week call home begging to stay for 3 or 6 weeks.

It is a Musical Theatre camp but it is also a Sports camp. There is something for everyone. Children develop skills not only on stage, but also socially, in sports and personally. For almost 60 years Harand has been enriching the lives of children and creating literal lifelong friendships.

My counselor from when I was 13 was just the Maid of Honor in one of my closest friend's wedding. The 90+ founder of camp (who used to be a successful vaudevillian actress, oh the stories she tells) is still teaching at camp and is very involved in all aspects of camp, including getting to know the campers.

The children are taught not just by college students but also by theater professionals. It's like a Master Class every day. Kids take singing, acting and dancing classes every day but also choose electives like improv, arts and crafts, theater tech, swimming, yoga and recently we added certified Zumba classes. We had a history of musical theatre class and a class devoted to Harry Potter. It changes every year so returning campers always have something new to choose. But a lot go back to old favorites (like improv and Zumba).

The camp is currently at Carthage College in Kenosha, WI. This means no physical "cabins" but dorm rooms instead. This also means, a better and wider variety of food than at most other camps, indoor heated pool, and actual theater space including a black box theater. Children have more personal space than in some other camps and no chance of poison ivy.

"This camp is one of the best investments that you can make in the development of your child."

CampRatingz.com

Find, rate and review Summer Camps and Overnight Camps

"I went to Harand for 7 years and my son went for 5. **Harand is the best experience a young person can ever have.** Harand builds self-esteem, confidence and inclusion, while providing an enriching experience for every camper. The roles are divided, so everyone has a chance to shine on stage. I have had friendships for over 40 years because of Harand. **The memories your child will take with them are priceless.**"



"A 10 year camper myself, **Harand has given me the confidence, talent, and lifelong friends that have helped me grow and change as a person.** Harand is a family-oriented place that knows how to change lives and provide excellent experiences that last a lifetime."



**"This camp has such a good environment.
You feel like you are a family with everyone and that you really belong."**

**"This camp is a treasure. They help to make your child grow as a person.
I have been lucky enough to experience this for the past 4 years and counting!"**

"So warm and welcoming! Immediately you become part of another family!"

"This camp is amazing. From the pageant at the end of three weeks to the shows at the end of six weeks. Singing, dancing, costumes... **Each child has the chance to do it all from tech to star! An incredible experience!"**

"Harand has been my second home for as long as I can remember. A great camp that teaches children self-confidence over the need to be a star. At Harand Camp - No Man Is An Island."



**"I went to dozens of camps this was far and away the best
with friends made that I still talk to decades later."**

**"This was the best camp that I ever went to!!
People here are so nice and I had a lot of fun!
Can't wait for next summer!!!"**



"We just wanted to say a great big THANK YOU to everyone at Harand for making Aaron's first sleep-away camp experience AMAZING! The first thing he said after the showcase yesterday was, "Mom, you better make sure I am not in a show next summer so I can stay for 3 weeks!" I think that is a resounding testimonial to how awesome camp was for him! When asked about his favorite part of camp, he told us the people and friends he made. He loved his cabin mates and his counselors.

We were absolutely thrilled with everything. And the performances were spectacular!"



"This is an amazing, family owned and operated musical theatre and sports camp. It has been in existence for almost 60 years. Because it has been around so long there are 3rd and 4th generations of families that attend. **Even if your child isn't into singing, acting and/or dancing this is a great camp to send them to for personal growth and refining social skills. There are no divas at this camp**, there is an emphasis on sharing and team and ensemble building. However, if your child is VERY into theatre the staff can help them develop as performers and as people. I attended this camp for several years in my teens and many of my friends are still from here as it is with many alumni. There are two 3 weeks sessions, or younger children can stay for the 1st week. But staying all 6 is the BEST!"



"Great camp! I learned so much over the years from them. If you love theatre and having fun you must go, you'll have the time of your life!"

"Transformative for any child, particularly those who enjoy performing. Very nurturing and non-competitive."



"Harand truly is a magical place and helped shape who I am today. It helped give me the confidence to be myself and appreciate differences in others...all while having fun singing and dancing (kind of a real-life Glee). The quality of productions and what these kids accomplish in just three weeks is fantastic. **I recommend this camp for anyone who loves theater and wants to shine on stage without the crazy competition and nasty politics.** There are fun cabin nights like bowling and go-karting, sports and activity classes, AND during the second session EVERYONE gets a lead in a show. **It really is an amazing and unique place."**

**"Best camp in the whole freaking world!
I am so happy I went here!"**



Sulie & Pearl
Harand Camp
of the
Theatre Arts

2023 Application

**PLEASE ATTACH
 RECENT PHOTO
 OF CAMPER**

IMPORTANT

1147 Ashland Ave, Evanston, IL 60202 ~ P: 847.867.1356 ~ E: harandcamp@gmail.com

PLEASE FILL OUT BOTH SIDES COMPLETELY

Name of Camper: _____

Address: _____ City: _____ State: _____ Zip: _____

Phone: _____ Preferred Email: _____

Birth Date: _____ Age at Camp: _____ Grade in 2023/24: _____

School in 2022/23: _____ School in 2023/24: _____

Previous Arts Training or Experience (not required):

_____ Years: _____
 _____ Years: _____

Previous Camp Experience (not required):

_____ Years: _____
 _____ Years: _____

How did you find out about Harand Camp? _____

ACTIVITIES OF INTEREST

Every camper takes classes in Acting, Singing, and Dancing, as this is the basis of our Performing Arts program.

In addition, each camper will sign up for a variety of elective classes and enjoy recreational activities.

Please indicate your preference as a guide for our Program Department.

This is not all-inclusive or binding as campers will make their own choices when they arrive at camp.

- | | | | |
|---|--|---|--|
| <input type="checkbox"/> Action Territory (Ent. Park) | <input type="checkbox"/> Dance (ballet/tap/jazz) | <input type="checkbox"/> Photography | <input type="checkbox"/> Story Theatre |
| <input type="checkbox"/> Arts & Crafts | <input type="checkbox"/> Creative Writing | <input type="checkbox"/> Piano (private) | <input type="checkbox"/> Swimming |
| <input type="checkbox"/> Audition Workshop | <input type="checkbox"/> Film/Video | <input type="checkbox"/> Racquetball | <input type="checkbox"/> Technical Theatre |
| <input type="checkbox"/> Badminton | <input type="checkbox"/> Fine Arts (painting) | <input type="checkbox"/> Roller/Ice Skating | <input type="checkbox"/> Track |
| <input type="checkbox"/> Baseball/Softball | <input type="checkbox"/> Guitar | <input type="checkbox"/> Softball | <input type="checkbox"/> Tumbling |
| <input type="checkbox"/> Basketball | <input type="checkbox"/> Health & Fitness | <input type="checkbox"/> Song Presentation | <input type="checkbox"/> Volleyball/Newcombe |
| <input type="checkbox"/> Bowling | <input type="checkbox"/> Improv | <input type="checkbox"/> Stage Combat | <input type="checkbox"/> Water Polo |
| <input type="checkbox"/> Cheerleading | <input type="checkbox"/> Martial Arts | <input type="checkbox"/> Stage Makeup | <input type="checkbox"/> Yoga |
| <input type="checkbox"/> Costuming | <input type="checkbox"/> One-Act Plays | <input type="checkbox"/> Stage Management | <input type="checkbox"/> Zumba |

Parent/Guardian (Main Contact): _____

Preferred Email: _____ Preferred Phone: _____

Additional Parent/Guardian (Optional): _____

Preferred Email: _____ Preferred Phone: _____

List siblings of the camper:

Name: _____ Age: _____ Name: _____ Age: _____

Name: _____ Age: _____ Name: _____ Age: _____

Parent or Guardian must sign agreement on other side!

TUITION AND FEES

A. Camp Tuition: (PLUS WI Sales Tax as noted in section B)

_____ One-Week Session	(06/18/23 – 06/24/23)	\$1500
_____ 1 st Session (3 weeks)	(06/18/23 – 07/09/23)	\$3650
_____ 2 nd Session (3 weeks)	(07/10/23 – 07/30/23)	\$3750
_____ Full Session (6 weeks)	(06/18/23 – 07/30/23)	\$6500

PAYMENT PLANS ARE AVAILABLE. Please call us at 847.867.1356 to make payment arrangements asap. Tuition covers room & board; arts & activity classes; recreational activities; costumes; scripts & music; supplies; camp outings (bus travel); and personal laundry up to \$15 per session. (Parents provide balance, if over \$15)

B. Fees and Charges (Added to Final Statement)

- **Wisconsin Sales Tax** (added to final balance)

C. Personal Costs (Paid Separately):

- **Mini-Bank and dorm keycard deposit** (cash or check due at check-in)
 - **\$65** (\$50 mini-bank per session plus \$15 refundable deposit for dorm keycard)
Mini-Bank is personal spending money provided by the family for the camper to use on trips. Money is placed in safe keeping until withdrawn by the camper. Records are kept throughout camp and the balance refunded to parents at check-out.
- **Medical bills and prescriptions** not covered by your own insurance
- **Private instrumental instruction or academic tutoring**
- **Luggage shipment to Camp** (North Shore Luggage / UPS etc.)

TERMS OF CONTRACT

- Enrollment for Harand Camp is ongoing and subject to availability
- A non-refundable deposit of \$500 must accompany this application*
- A second non-refundable deposit of \$500 is due by February 15, 2023*
- If enrolling after February 15, both deposits (\$1,000) are due with this application
- To secure your child's place in camp, the full balance must be paid by May 1, 2023
- NO REFUNDS if the camper is withdrawn or dismissed for any reason after May 15, 2023*
- **The bus to camp (\$35 fee), COVID-19 testing fee and vaccination requirements are still pending for the 2023 camp season.** Please stay tuned to our website and email for updates!

PAYMENT METHOD

_____ **CHECK** (payable to Harand Camp of the Theatre Arts) **Payment Amount:** _____

_____ **CREDIT CARD*:** _____ MasterCard _____ Visa **Payment Amount:** _____

Name on Card: _____

Card Number: _____ Exp. Date: _____

Billing Address: _____ Zip Code: _____

*A 2% processing fee will be applied for all credit card payments after the initial \$500 deposit.

AGREEMENT

This application has my full consent and approval and I hereby enroll my (relationship) _____
(camper name) _____ into Harand Camp and agree to the terms specified above.

Select One: _____ One-Week Session _____ 1st Session _____ 2nd Session _____ Full Six-Week Session

Please indicate if permission is granted with a "yes" or "no": _____ Swimming _____ Outings & Trips

Please list any special dietary restrictions or allergies: _____

Parent/Guardian Signature: _____ **Date:** _____



Sulie & Pearl
Harand Camp
of the
Theatre Arts

Scholarship Application

1147 Ashland Ave, Evanston, IL 60202 ~ P: 847.867.1356 ~ E: harandcamp@gmail.com

INSTRUCTIONS

The Mission of the Harand Camp Scholarship Fund (HCSF) is to provide camp scholarships to young people, ages 7 to 18, from diverse and "at risk" backgrounds, who have an interest in music, dance, drama, or technical theater, and have financial need. We are dedicated to making camp accessible for children of all backgrounds. To ensure this, the HCSF offers income-based financial aid (on a sliding scale) and full scholarships to low and middle-income families. To be considered for a scholarship, you must submit proof of income. This may be a copy of your most recent Federal Tax Return or combined household W-2's.

Due to the large number of applicants, scholarships will only be awarded for one THREE week session (full or partial tuition). **ONE- and SIX- week campers are not eligible for scholarships.** Campers planning to attend camp for six weeks may not apply for a scholarship to cover any part of tuition. This would be unfair to those applicants who would otherwise be unable to attend camp at all. However, payment plans are available.

Upon receiving a scholarship award each family will be asked to contribute a minimum of \$100 towards tuition.

To be considered for a scholarship, please submit the following materials:

- o **Completed Harand Camp Scholarship Fund Application Form** (completed by parent or guardian)
- o **Completed Harand Camp General Application** (completed by parent or guardian)
- o **Proof of Income** (copy of current Federal Tax Return/household W2s – please do not send originals!)
- o **Personal Essay** (written by the child) including: a description of him/herself and background; details about his/her interest and experience in musical theater, music, drama, dance and/or technical theater; why Harand Camp would benefit them; and what s/he will bring to Harand Camp.
- o **All materials are due by APRIL 15. Scholarship recipients will be notified by MAY 1.**

PLEASE FILL OUT BOTH SIDES COMPLETELY

Name of Camper: _____

Birth Date: _____ Age at Camp: _____ Grade Next Fall: _____

Why are you requesting a scholarship?

How will attending Harand Camp benefit the child?

Is there any other information about yourself or the child you would like to include?

List your significant expenses (such as health or automobile insurance, medical bills, etc.) that are not covered by insurance, rent, mortgage, etc.

Description of Expenses:	Amount:
_____	\$ _____
_____	\$ _____
_____	\$ _____
_____	\$ _____

Income Information:

Combined Family Income: \$ _____ / month x 12 = \$ _____ / year

Support or additional income: \$ _____

Total number of children/dependents in family: _____

Other relevant information: _____

Level of Scholarship applying for:

Full Scholarship Half Scholarship Sliding Scale (based on your income)

Camp Session Requested:

First Session Second Session Either Session

Do you receive Public Assistance?

Yes (please check each that applies and provide ID number)

Disability: _____ Social Security: _____

Medical: _____ Unemployment: _____

Parent/Guardian Agreement

I have read and completed all sections of this application and the information provided is correct. I am submitting both the camp and scholarship applications, as well as the child's personal essay for your consideration. I am also providing you with copies of my documentation for proof of income.

Parent/Guardian Signature: _____ Date: _____

Print Parent/Guardian Name: _____

Preferred Email: _____ Preferred Phone: _____

PLEASE INCLUDE INCOME VERIFICATION AND ESSAY WHEN SUBMITTING THIS FORM



Sulie & Pearl
Harand Camp
of the
Theatre Arts

Instruction Booklet 2023

(Updated September 8, 2022)

2023 Camp Dates

1-Week Session: 06/18/23 - 06/24/23

First Session: 06/18/23 - 07/09/23

Second Session: 07/10/23 - 07/30/23

Full Session: 06/18/23 - 07/30/23

Please read all information regarding Summer 2023 and return forms in a timely manner. The contents of this book will answer most of your questions and help you prepare for the summer. Be sure to stay tuned regarding any updates due to COVID-19. Documents are available at harandcamp.com/forms-docs. Your preparation will help ensure an amazing summer for all!

TABLE OF CONTENTS

Bedding/Linens	3
Birthdays	3
Camp Living	5
Cell Phone Policy	5
Check-In/Arrival	2
Check-Out/Departure	6-7
COVID Testing	4
Electronics	8
Email	5
Fees and Tuition	2-3
Flights to Camp	2
Health Center	4
Insurance	4
Laundry	3
Luggage	2
Mail	5-6
Mask Policy	4
Meals	4
Medical	4-5
Music Lessons	8
Orthodontist	4
Packages from Home	6
Packing for Camp	7-8
Payment Terms	3
Rules & Regulations	5
Schedule	4
Spending Money/Mini-Bank	3
Swimming	8
Telephone Calls	5
Transportation To/From Camp	2
Tutoring	8
Vaccination	4
Visiting Days & Shows	6-7

PLEASE SAVE THIS BOOKLET FOR FUTURE REFERENCE

HARAND CAMP CONTACT INFORMATION

EVANSTON - Phone: 847-867-1356

CARTHAGE - Phone: 262-551-2140 (6/13 to 8/1)

Email: harandcamp@gmail.com ~ Website: harandcamp.com

INSTRUCTION BOOKLET 2023

CHECK-IN AND TRANSPORTATION TO/FROM CAMP

CHECK-IN/BUS TO CAMP: We have not decided if we will have a bus to camp in 2023. In 2022 all families were given a specific arrival time and location at Carthage College. Please stay tuned for additional details and instructions for 2023.

ARRIVAL DATES: Sunday, June 18th (First Session) and Monday, July 10th (Second Session)

LOCATION & TIME: TBD

CAMPERS FLYING IN FOR CAMP: Campers flying in for camp must plan to arrive at Milwaukee's Mitchell International Airport between 9 a.m. and 12 p.m., on Sunday, June 18th (First Session) or Monday, July 10th (Second Session). They will be met by Harand staffers at Baggage Claim and taken to Carthage. Please have your camper wear a Harand shirt so they are easy to identify. Our staff member will do the same. Parents must submit their travel plans for approval by May 30th. Please note there is a \$40 airport pick-up / drop-off fee (each way).

DEPARTURE: Returning home after camp and airport departures are the responsibility of your family. If a Parent/Guardian will not be attending Visiting Day and you need transportation assistance to the airport, this may be arranged with Harand Camp for a \$40 fee. Please note we can only assist with airport departures during a short timeframe on Sunday, July 9 and Sunday, July 30. We are unable to help with transportation on Saturdays. Contact us asap to make arrangements and coordinate flights.

LUGGAGE

CHICAGOLAND BAGGAGE INSTRUCTIONS: Please use NSM Camp Luggage Services to transport your baggage to camp. They will pick up at your home and deliver to Carthage College. Jim & Allison Larkin, owners of NSM, will contact you via email 1-2 weeks before camp starts with your exact pick-up date. Rate is \$95 for one-way transportation per child for pick-up, and \$95 per child for return delivery (if needed). NSM is not responsible for fans or musical instruments. Checks should be made payable to NSM Camp Luggage Services. **Contact Information:** 847-890-3869 or campluggagesvc@aol.com

OUT OF TOWN LUGGAGE: If your area is not served by NSM Camp Luggage Services, we recommend UPS or FedEx. You can ship to: Harand Camp, c/o Carthage College, 2001 Alford Park Drive, Kenosha WI, 53140-1994. Please allow 7 business days for delivery. Please call UPS directly at 1-800-742-5877.

Please avoid bringing luggage with your child to Check-In. If there is a problem with sending luggage in advance, please contact the camp office prior to arrival at camp. Smaller items (such as backpacks, bedding, medications & instruments) may be brought to Check-In.

Please provide your own luggage tags. Harand Camp must be printed large on one side of the tag and the camper's name must be attached securely on the outside of the luggage. Please include on each tag: your child's name and address, and Harand Camp, Carthage College, 2001 Alford Park Drive, Kenosha WI, 53140-1994. Otherwise, address the luggage on the outside of the footlocker or box. Bring an envelope containing your camper's luggage keys (labeled with your child's name).

TUITION AND FEES

CAMP DATES and FEES: Tuition includes room and board, all theatre and elective instruction, costumes, supplies, and recreational activities. Personal laundry of up to \$15 per session is also included. Wisconsin sales tax will be charged on taxable items only.

<u>Session</u>	<u>Camp Dates</u>	<u>Tuition</u>
One-Week (1 week)	06/18/23 - 06/24/23	\$1500
1st Session (3 weeks)	06/18/23 - 07/09/23	\$3650
2nd Session (3 weeks)	07/10/23 - 07/30/23	\$3750
Full Session (6 weeks)	06/18/23 - 07/30/23	\$6500

PAYMENT TERMS: Non-refundable deposit of \$500 must accompany the application. Second deposit of \$500 due by February 15, 2023. If enrolling after February 15, both deposits (\$1,000) are due with the application. Neither deposit refundable after March 1, 2023. To secure a place in camp, the balance of tuition must be paid in full by May 1, 2023. There are NO REFUNDS if the camper is withdrawn or dismissed for any reason after May 15, 2023. Remit payment to Harand Camp of the Theatre Arts, 1147 Ashland Avenue, Evanston IL, 60202. **We accept Checks (payable to "Harand Camp of the Theatre Arts"), Visa & MasterCard. A 2% fee applies on credit card payments after initial \$500 deposit!**

COVID TESTING FEE: Our COVID protocols and testing fee are still TBD for 2023. Please stay tuned for additional details.

PERSONAL SPENDING MONEY OR "MINI BANK": Campers should bring \$65.00 cash or check, per session, which will be deposited in the camp "Mini-Bank." This account is meant to be used for personal spending or personal items such as stamps, souvenirs, or miscellaneous purchases. Mini Bank withdrawal amounts are limited by the Office staff, based on what is needed for the activity. The remaining balance is returned upon check-out.

LAUNDRY: Harand Camp will also cover personal laundry charges up to \$15 per session (or \$30 per season). The parents will be obliged to pay any amount over this listed fee.

BEDDING/LINENS: Please provide two sets of **Twin XL linens**, a pillow, blanket or comforter, and towels. These will be laundered as part of the camper's personal laundry. If you pack a sleeping bag, it should be able to be fully unzipped and used as a blanket. **There is NO linen rental option for campers.**

ARTS PROGRAM & SCRIPTS: Tuition includes costumes, art supplies, scripts, etc. All items must be returned at the end of the session undamaged or there will be a replacement charge of \$50 per script.

DAMAGE TO HARAND, CARTHAGE, OR PERSONAL PROPERTY: Parents will be held responsible for any damage incurred and will be billed accordingly.

BIRTHDAYS: **There is a \$35 charge for cake & decorations.** We do our best to make this day special. If you would like to arrange a party for your camper's cabin, call in advance to make arrangements. This is your decision and is not required. If you wish to send gifts, please ship them to arrive in time.

MEDICAL FORMS AND CARE

Our policies & procedures will be updated or revised based on evolving information related to COVID-19 and guidance from the CDC, ACA, Federal & State Governments, as well as Carthage College.

DOCTOR'S CERTIFICATE: Every parent must complete, update and sign the **HEALTH HISTORY AND IMMUNIZATION** section of the enclosed Camp Health Examination form (page one and the top of page two of the four-page form). **This MUST be signed and sent to our Evanston office by May 30th.**

NOTE: Your camper must have been examined by your doctor within the last 24 months prior to camp. The doctor must sign the medical form either way. If we have your signed medical form from last summer, you do not need the medical examination portion filled out by the doctor, only the updated

HEALTH HISTORY. Be sure to sign the box on the form that is headed "In case of emergency," which gives our camp doctor the right to take care of your child. It is important that you sign the medical permission section of the form, as most doctors will refuse even minor care unless this section is signed.

Be sure that your physician tells our medical staff about any **allergies or special problems**. We must also know about **previous illness or problems**. Please consult the Camp Nurse before sending your child if they have been ill within 14 days of camp. All information is vital to the safety of all Haranders.

If your child has been exposed to or recovered from a contagious disease or infestation recently, please let us know (examples: COVID-19, Strep Throat, Chicken Pox, Head Lice, Influenza, etc.)

All campers must have received measles inoculation before camp. Campers are also urged to get the influenza vaccination to reduce the risk of the flu and keep COVID-19 symptoms more recognizable.

COVID VACCINATION: Our 2023 vaccination policy is TBD. For 2022 Harand Camp required ALL campers and staff to be fully vaccinated against COVID-19 - including all available boosters. Campers had to be fully vaccinated to attend Harand Camp in 2022, ensuring they have completed their vaccine regimen at least two weeks prior to their arrival on campus. Proof of vaccination was required and a copy of the Camper's vaccination card had to be included with your health forms and also brought to check-in. Unvaccinated campers could apply for a medical or religious exemption with proper documentation and a letter from your medical provider or religious/spiritual leader. Requests should be sent to harandcamp@gmail.com and will be reviewed on a case-by-case basis. If we choose to require vaccination in 2023 but you have already enrolled and do not wish to vaccinate or apply for an exemption, we will refund your payments.

MASK POLICY: The Mask Policy for 2023 is TBD. In 2022 we had a "mask optional" environment for a majority of the Season. Masks were required indoors for the first 3-4 days of each session when interacting outside cabin cohorts, allowing us time to identify any breakthrough cases before they could spread widely throughout camp. Masks were also required for ALL at Check-In/Out, on Visiting Days (when indoors), for audiences at performances, and for off-campus trips (which will be limited to lower-risk activities). This 2023 policy will be based on case numbers and official recommendations.

COVID TESTING: The COVID Testing program is TBD for 2023. In 2022 we required a PCR Test within 72 hours of arrival (regardless of vaccination status), On-site Arrival Screening using Rapid Antigen Tests on Day 1 (at check-in), Weekly Camp-wide Surveillance Testing using Rapid Antigen Tests, and Diagnostic Testing using Rapid Antigen Tests in response to potential cases and exposures.

INSURANCE: Complete all the information on the health & insurance form. **All campers must have health and accident insurance.** This coverage is your normal family health coverage. Fill in the section completely and sign and return it to us by May 30th. Be aware of your insurance coverage. Co-payments must be paid and parents need to deal with physician billing promptly.

MEDICATION FORM: A medication form is also included within the health form. It is imperative that you fill out and sign the form if your child is on any medication. Return it to us with other medical forms and the insurance information by May 30th. Photocopy and include both sides of the insurance card.

PARENTAL NOTIFICATION OF MEDICAL CARE: In a medical emergency, parents will be notified as soon as possible. In a non-emergency situation, parents will be notified if a camper needs to stay overnight in the health center or see a doctor for any reason.

BE SURE TO SIGN AND RETURN ALL MEDICAL & INSURANCE FORMS – including the Health History and Examination Form, Parent Authorization Form, Carthage Camp and Conference Form, and the Medication Form. Include a photocopy of your INSURANCE CARD.

CAMPER MEDICINES: Please be sure that ANY medicines that are to be taken at camp, as well as their instructions for use, are kept in their respective bottles and properly marked by the pharmacy with the camper's name, dosage and times specified. Unlabeled medication will not be dispensed. Medications are to be given to a staff member at check-in. This includes over-the-counter medications. If you wish to send any medicines to the camper, send them directly to the Camp Director and be sure they are properly marked. ALL drugs and medicines are kept by the Camp Nurse at the medical center and dispensed to the camper, as he or she needs it. With written permission, campers will be allowed to keep life sustaining items such as EpiPens and inhalers. **Under no circumstances should a camper keep any medication in his/her private possession or distribute to other campers. Please communicate this rule to your child as it is for the safety of all campers.**

HEALTH CENTER / MEDICAL NEEDS will be handled by the Camp Nurse during infirmary hours. Should there be an emergency, there is a nurse on campus at all times. Additionally, First Aid Kits are available in all buildings, and physicians, Urgent Care, and the hospital are 10 minutes from camp.

ORTHODONTIST: Emergency orthodontia is available in Kenosha. All work can be coordinated with your own orthodontist. To facilitate the necessary communication, please add the name and phone number of your orthodontist to the Health Form. This will be for emergencies only. Please do not schedule regular check-ups or visits during the 2023 Camp Season.

CAMP LIVING

Living / Rooms: Upon arrival, campers will be divided into cabin groups by age and reside together in the dorm (2-3 per room). Single rooms will not be available for the 2023 Season unless additional COVID-19 protocols need to be put in place. Triples are very rare and will be limited to cabins with an odd number of campers or floors with extra-large dorm rooms.

Roommates: Roommate requests are optional & MUST BE MUTUAL! Room / Roommate Requests should be noted on the Camper Information Form and set to harandcamp@gmail.com.

Meals: Meals are served three times a day in the dining hall and include many options. Please notify us of any restrictions (ex: celiac, vegan, vegetarian) or allergies (ex: nuts, fish).

Schedule: Campers spend half the day in theatre classes and the other half in electives of their own choosing. Evenings and Sundays include a rotating schedule of rehearsals, cabin nights, and all-camp events and games. Electives will be selected the first night of camp. All campers are required to participate in the arts program and activities. Elective classes may be changed after the first week.

CAMP RULES & REGULATIONS

To facilitate communication and avoid misunderstanding, please read and discuss this information with your camper PRIOR to arrival at camp.

- **Camp is SCREEN FREE. Cell phones are NOT permitted** and, if brought, will be stored in our safe until the end of camp. This includes cell phones used as personal music players with or without active SIM cards.
- All medications (including aspirin) will be stored in the Camp Health Center for distribution by our camp nurses (as per state law). Campers may not self-medicate or share any medication with other campers. This is for the safety of all.
- All campers will participate in daily clean-up of rooms for inspection.
- Campers are not allowed to use the internet or computers located on campus.
- Campers are expected to refrain from inappropriate behavior and language - especially when participating in activities off campus and around our younger campers.
- We support freedom of expression, however, attire depicting explicit or offensive images or language is not allowed.
- Cabin in-times must be followed (we don't want you to be exhausted and getting sick!)
- Campers are not allowed in dorm areas/floors of other cabins without permission from the Staff.
- All Campers must follow the COVID Rules put into place by Harand Camp. Please read our COVID guide (TBD for 2023) with your Camper before camp! Being part of the Harand Camp Family, living under the ideals of "No Man is an Island," means that each of us must take extraordinary steps to protect (and defend) each other. While we are putting safety protocols in place, we ask that ALL Campers and Staff also take responsibility for their own health to keep the entire community safe and prevent the spread of COVID-19.
- The following may result in dismissal from camp:
 - Leaving campus without camp director approval.
 - Smoking, use, or storing of alcohol, marijuana, or any non-prescribed drug/illegal substance
 - Violence or threats against anyone (Harand or Carthage staff, campers, yourself, etc.)
 - Continuous disruptive or destructive behavior
 - Defacing or destroying camp or Carthage property
 - Purposely and maliciously disobeying COVID rules put into place by Harand Camp
 - We do not tolerate bullying!

COMMUNICATION - CALLS, LETTERS and EMAILS

Address: Harand Camp c/o Carthage College, 2001 Alford Park Dr., Kenosha, WI, 53140-1994

Phone: 262-551-2140

Email: harandcamp@gmail.com

PHONE CALLS: No calls to campers will be allowed during the first full week of each session, except for emergencies or special occasions. If necessary, you may call the Camp Directors to check on your child. After the first week, please limit your calls to one per 3-week session. The campus is large and your camper is always involved in some scheduled activity, so please leave a message with the office and your camper will return your call. The office is available to take messages for your camper from 10 am to 5 pm, Monday-Saturday, though we can be reached at off-hours in case of emergencies. Campers will only return calls 1:30pm-2:30pm, 5pm-5:30pm, and 6:30pm-7pm. Calls will be limited to a maximum of 5-10 minutes. We only accept calls from parents or legal guardians. No calls on Sundays.

MAIL FROM YOU: Please write often! Keep letters happy and upbeat. Campers look forward to mail and getting recognition of their achievements. Write at least once a week (or daily!). Mail is delivered Monday-Friday only. Send to: Name & Cabin, Harand Camp c/o Carthage College, 2001 Alford Park Dr., Kenosha, WI, 53140-1994.

E-MAIL FROM YOU: Emails must be sent to harandcamp@gmail.com and have the camper's name written in the subject line. Please do not include attachments or photos. Emails are printed at 11 a.m. and delivered to campers with mail call (after lunch) Monday-Saturday. Campers will not be able to reply via email. We encourage friends and other relatives to use email or regular mail.

PACKAGES FROM HOME: Campers are well fed by Parkhurst Food Services, with three meals a day and desserts! If you must send food treats, please understand that they will be shared with the entire group. The counselor will assist in distributing treats equally and safely! Remember that the entire group will be sharing packages with your child to eliminate hurt feelings, so please send enough for all. Do not send perishable foods, sparklers or fireworks, or dangerous or destructive items. Please limit packages to one per session. Please remember: NO PERISHABLE FOOD ITEMS or PRODUCTS CONTAINING NUTS.

MAIL FOR YOU: Campers are encouraged to write letters home at least once a week. Stamped post cards already addressed to you and others are excellent to include when packing - especially for younger campers. Campers could even start addressing their cards now! Send plenty of stamps.

VISITING DAYS, PERFORMANCES AND CHECK-OUT

We are planning to have regular Visiting Day and Performances in 2023. If this changes due to COVID-19 and we need to proceed virtually we will alert you as soon as possible.

In 2022, visitors, campers and staff were required to wear a mask at all times when indoors interacting with those outside the camp bubble. Parents were allowed in the dorms* (masked!) during Visiting Days and Check-Out, but had to limit the time spent in the dorm. Masks were required for audiences during shows, but optional for performers.

Visits are not allowed other than the times listed below! Further detailed instructions regarding Visiting Days and Performances will be sent to you while camp is in session.

Important dates are as follows:

ONE-WEEK (WORKSHOP)

It is strongly advised that if your 1-week camper has elected to stay for the full 3-week session, parents should NOT attend the workshop and instead attend Visiting Day and Pageant on July 8th.

Workshop Performance: Saturday evening, June 24 at 7pm

The Workshop is exclusively for families of one-week campers only! You will be seated separately from our campers and must be masked!

1-Weeker Check-Out: Saturday, June 24 after the Workshop performance

- One-week campers will check-out immediately following the workshop performance.
- *Parents/Family of one-week campers will not be allowed into the dorm
- 1-weekers will have their luggage & belongings brought to the Straz Center/Theater for pick-up

FIRST SESSION (PAGEANT)

Visiting Days: Saturday, July 8 at 10:15am & Sunday, July 9, 9:30am-Noon

- Following introductions and demonstrations on July 8th, Campers may leave campus with their families after notifying the Harand Staff. In 2022 we asked that all families exercise caution off campus and that they elect to eat outside and wear a mask indoors! This was especially important for our 6-week campers who continued on at camp for three more weeks. Best practice: Take a Rapid Test before Visiting Day (optional)!
- Campers must return to their cabins by 4pm so they can get ready for the Pageant!
- Families will not be allowed in the dorm after 4pm! Visitors should leave campus for dinner before returning to line up outside the theatre around 6:30pm.
- The Pageant Production will begin at 7:15pm.
- Detailed Visiting Day Instructions will be emailed by the beginning of Week 2 (week of June 26).

Pageant Performance: Saturday evening, July 8 at 7:15pm

1st Session Check-Out: Saturday, July 8 after Pageant OR Sunday, July 9, 9:30am-Noon

- First session campers may check-out on Saturday night, July 8th following the Pageant performance OR on Sunday, July 9th from 9:30am to 12pm.

SECOND SESSION (MUSICALS)

Visiting Day and Performances: Saturday, July 29 starting around 9:30am

- Shows will run all day on Saturday. Campers and families are welcome to attend all shows.
- A performance schedule will be distributed during the Second Session

2nd Session Check-Out: Saturday, July 29 following your show OR Sunday, July 30, 9:30am-Noon

- Campers may check-out following their show on Saturday, July 29th or on Sunday, July 30th from 9:30am to 12pm.

RESTRICTIONS: Parents may not take the campers from the camp property at any time during the camp season other than visiting weekend. It is imperative even at that time that the parents officially advise us of their plans, for obvious security reasons. Please remember that visiting day is a special time for you and your camper. Please: Family members only on visiting days.

CAMP REGULATIONS: Parents can be of great assistance in maintaining camp discipline during visiting days by not encouraging any violations of camp rules. Parent suggestions that are contrary to camp rules create a conflict for their child. Carthage has the following rules while on campus: NO Smoking within 25 feet of buildings, NO Chewing Gum, and NO Pets.

PACKING FOR CAMP

PACKING LISTS: Please see the Packing and Costume Lists [on our website](#) for recommended items! The Clothing List should be used as a guide, while the Costume List should be followed closely! Remember, most items can be found in the camper's wardrobe.

HARAND-WEAR: Campers need a white Harand t-shirt and plain white or blue shorts for camp pictures. To purchase Harand t-shirts in various styles and colors, please visit harandtheatre.annarbortees.com.

PROTECTIVE ATHLETIC EQUIPMENT: We do not provide personal athletic protective equipment for sports and activities. You may send along these items at your discretion.

IMPORTANT: Please do not send more than the packing list recommends. No camp can supply enough space for excess items and it may stay packed up for the entire season. Remember, we have laundry service twice a week. Send at least 10 hangers! Do not send expensive or easily damaged

clothing, jewelry or equipment. Lost or stolen items are not our responsibility. We support freedom of expression but attire depicting explicit or offensive images or language is not allowed.

NAME TAGS: All items of clothing and personal property must have name tags secured to them. For clothing, name tags or indelible pen may be used. Name tags should be placed where the laundry staff can easily find them. An itemized list of what is packed should be secured to the inside of the luggage, so we can help keep track of the camper's possessions. **LABEL EVERYTHING.**

Lost and Found: *Check for everything, items left behind may be donated to charity.*

ELECTRONICS: Music devices are okay, but please mark the camper's name on all items. Music must be in good taste. No vulgar or suggestive material allowed. Parental discretion is advised. **We try to be screen-free and do not allow TVs, cell phones, tablets, laptops or other personal electronic devices.** If brought to camp, they will be placed in our office safe and returned at the end of camp. No electric irons or knives of any kind. **Please NO expensive equipment. We are not responsible for loss or damage.**

INSTRUMENTS & HOBBIES: We encourage your child to bring their own camera, instruments, hobby and art supplies. Guitar classes may be available but campers must bring their own guitars.

CAMPER CONCERT: If your child is planning to perform in one of our camper concerts, please have them bring along sheet music or accompaniment.

MUSIC LESSONS: Upon request, lessons and practices under staff supervision can be arranged. Private instruction requires an extra fee decided between the parent & instructor. Call to make arrangements.

TUTORING: For special academic interests or upon the recommendation of your child's school, tutoring can be arranged. Fees will be determined between the parent and staff member tutoring the camper. If tutoring is desired, send books and lesson plans with your camper.

SWIMMING: Parent approval is required for campers to participate in swimming or using the pool. This must be noted on the Camper Application.

“We Are Family”

We consider your camper to be “our child” for the summer. We want these weeks to be meaningful, and it is up to all of us to contribute to the camper's health, happiness and development. Please write often, encourage progress, and be loyal and interested in camp and your camper's activities.

If you have any questions or concerns, please call us 847.867.1356, or email harandcamp@gmail.com. Additional information and forms may also be found on our website at harandcamp.com/forms-docs.

Thank you for sharing your family with us!

Yours for a summer of happiness and fun,
The Harand Family

PLEASE SAVE THIS BOOKLET FOR FUTURE REFERENCE

FIND MORE DOCUMENTS AND FORMS ON [OUR WEBSITE](http://harandcamp.com)